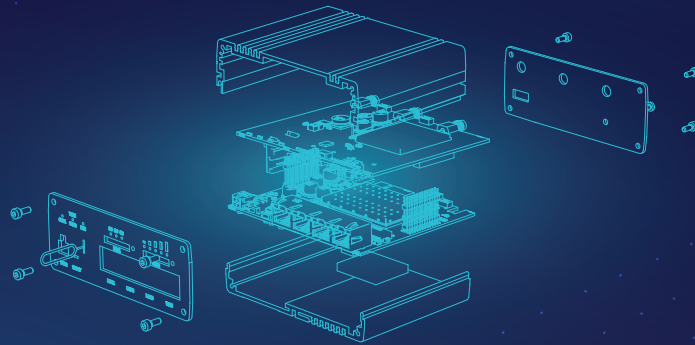


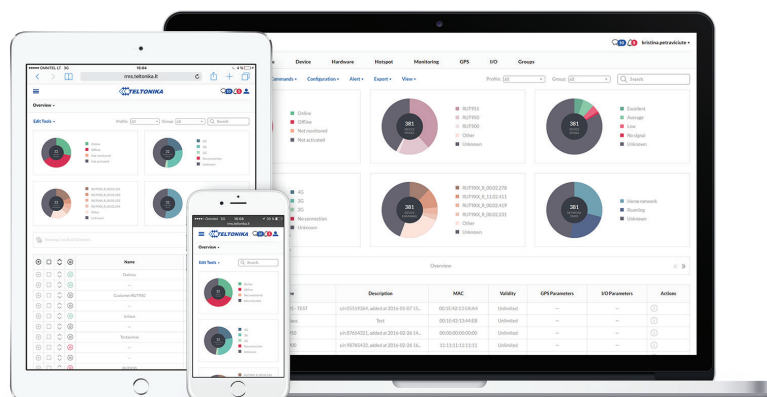
TELTONIKA Router & Gateway Overview



SECTRON is an official authorized partner to sell and instal TELTONIKA networking products designed to make your connectivity reliable, secure and quick to deploy. TELTONIKA products will help you build a solid IoT, M2M or enterprise networking infrastructure and advanced remote management capabilities will enable you to manage it with ease.

Portfolio Highlights

- ROUTERS are equipped with a variety of wireless and wired connectivity options and technologies
- RutOS based on Linux OpenWRT has become one of the most functional router operating systems in the market
- TRB programmable M2M gateways come with a variety of interfaces such as Ethernet, RS232, RS485 or Inputs/Outputs
- Remote Management System (RMS) as a centralized Cloud-based platform for remote monitoring, configuration and control



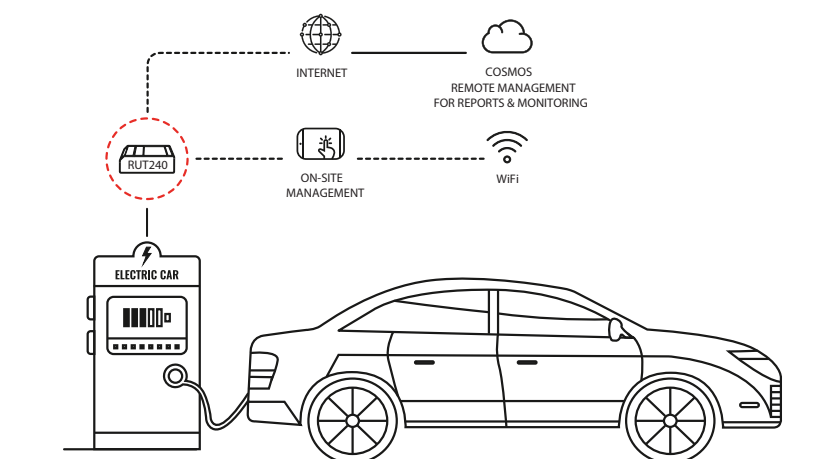
Routers comparison

Products key features	RUT230	RUT240	RUT850	RUT900	RUT950	RUT955	RUTX08	RUTX09	RUTX10	RUTX11	RUTX12	RUTXR1
Range	EASY	EASY	AUTOMOTIVE	ADVANCED	ADVANCED	PROFESSIONAL	ADVANCED	ADVANCED	ADVANCED	ADVANCED	ADVANCED	ADVANCED
3G	•	•	•	•	•	•		•		•	•	•
4G (LTE), Category		Cat4	Cat4		Cat4	Cat4		Cat6		Cat6	2×Cat6	Cat6
GNSS			•			•				•	•	
WiFi standard	n	n	n	n	n	n			ac	ac	ac	ac
RS232						•						
RS485						•						
USB						•	•	•	•	•	•	•
DIN Rail mounting	•	•		•	•	•	•	•	•	•	•	
Rack mounting												•
Flat surface mounting	•	•	•	•	•	•	•	•	•	•	•	
SIM card slots	1	1	1	2	2	2		2		2	2	2
Aluminium housing	•	•		•	•	•	•	•	•	•	•	•
CPU, MHz	400	400	550	550	550	550	717	717	717	717	717	717
Number of cores	1	1	1	1	1	1	4	4	4	4	4	4
RAM, MB	64	64	64	128	128	128	256	256	256	256	256	256
Flash memory, MB	16	16	16	16	16	16	256	256	256	256	256	256
Ethernet ports	2	2		4	4	4	4	4	4	4	5	5
Ethernet speed, Mbps	100	100		100	100	100	1000	1000	1000	1000	1000	1000
Passive PoE	•	•		•	•	•	•	•	•	•	•	
Power Supply voltage, V DC	9-30	9-30	9-30	9-30	9-30	9-30	9-50	9-50	9-50	9-50	9-50	2×(9-50)
Inputs/Outputs	2	2	2	2	2	6	2	2	2	2	2	
Grounding terminal							•	•	•	•	•	•
Sleep mode			•				•	•	•	•	•	
RMS support	•	•	•	•	•	•	•	•	•	•	•	•
RutOS	•	•	•	•	•	•	•	•	•	•	•	•

RUT240 Case study for EV charging stations

Circontrol's DC quick charging station is a complex and comprehensive hardware and software solution connected to Circontrol's advanced "COSMOS" cloud-based platform. It is used to collect and store data from a specific set of EV chargers for monitoring and reporting. In addition, it allows operators to address different actions such as subscribe and unsubscribe users and manage their permissions and profiles as required.

EV charger log is also included with a goal to reduce the fault resolution time, obtaining a quick diagnosis if any charger is not working as it should. Teltonika RUT240 is a crucial intermediary between EV charger, platform and the operator to ensure that Circontrol's EV chargers are always operating to their full potential. The router is plugged in via Ethernet interface and provides a stable and secure connection via LTE to Circontrol's platforms. In addition, WiFi hotspot functionality allows simple on-site inspection and management of preferred settings.



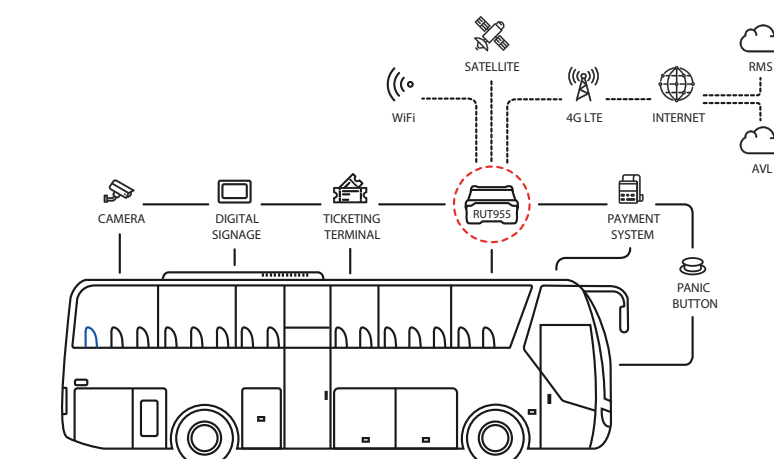
Gateways comparison

Products key features	TRB140	TRB141	TRB142	TRB145	TRB245	TRB255
Range	EASY	EASY	EASY	EASY	ADVANCED	ADVANCED
3G	•	•	•	•	•	
4G (LTE), Category	Cat4	Cat1	Cat1	Cat1	Cat1	M1/NB
GNSS						
WiFi standard						
RS232			•		•	•
RS485				•	•	•
USB	•	•	•	•		
DIN Rail mounting	•	•	•	•	•	•
Rack mounting						
Flat surface mounting	•	•	•	•	•	•
SIM card slots	1	1	1	1	2	2
Aluminium housing	•	•	•	•	•	•
CPU, MHz	1200	1200	1200	1200	500	500
Number of cores	1	1	1	1	1	1
RAM, MB	128	128	128	128	64	64
Flash memory, MB	512	512	512	512	16	16
Ethernet ports	1				1	1
Ethernet speed, Mbps	1000				100	100
Passive PoE						
Power Supply voltage, V DC	9-30	9-30	9-30	9-30	9-30	9-30
Inputs/Outputs	2	8	2	2	4	4
Grounding terminal						
Sleep mode	•	•	•	•		
RMS support	•	•	•	•	•	•
RutOS	•	•	•	•	•	•

RUT955 Case study for public transport

RUT955 by Teltonika is a single device able to address most onboard connectivity challenges with ease. It is favored amongst our partners in the transport field due to a reliable connection, it is able to provide using auto switching dual SIMs, a large number of physical interfaces and E-mark certification ensuring full compliance with a number of important requirements when mounting additional devices in aftermarket automotive vehicles.

- Provide accurate location tracking services using embedded GNSS module
- Connect up to seven 1080p30 CCTV IP security cameras due to robust and reliable Cat4 LTE
- Provide secure passenger hotspot with advertising and landing page for convenient and managed browsing
- Empower Digital Signage screens across the vehicle for informational and advertising services
- Give connectivity to existing or new ticketing terminals via Ethernet or Serial to ensure card payments or collect and upload ticketing statistics to operator's platform




Routers comparison

Products key features	Order code (Standard package)	Standard package content							
		Power supply	3G Antenna	LTE Antenna	WiFi Antenna	GNSS Antenna	Bluetooth Antenna	Ethernet Cable	USB cable
TRB140	TRB140003000	Euro adapter		1×					0.8 m
TRB141	TRB141003000	Euro adapter		1×					0.8 m
TRB142	TRB142003000	Euro adapter		1×					0.8 m
TRB145	TRB145003000	Euro adapter		1×					0.8 m
TRB245	<i>Available from 2019 Q4</i>								
TRB255	<i>Available from 2019 Q4</i>								
RUT230	RUT230 00E000	Euro adapter	1×		1×			1.5 m	
RUT240	RUT240 06E000	Euro adapter		2×	1×			1.5 m	
RUT850	RUT850 9011S0	Cable 2m		2×					
RUT850 GNSS	RUT850 911210	Cable 2m		2×		1×			
RUT900	RUT900 S024E0	Euro adapter	2×		2×			1.5 m	
RUT950	RUT950 U022C0	Euro adapter		2×	2×			1.5 m	
RUT955	RUT955 T033B0	Euro adapter		2×	2×	1×		1.5 m	
RUTX08	RUTX08000000	Euro adapter						1.5 m	
RUTX09	RUTX09000000	Euro adapter		2×		1×		1.5 m	
RUTX10	RUTX10000000	Euro adapter			2×		1×	1.5 m	
RUTX11	RUTX11000000	Euro adapter		2×	2×	1×	1×	1.5 m	
RUTX12	<i>Available from 2019 Q4</i>								
RUTXR1	<i>Available from 2019 Q4</i>								


For more information on all available packaging options – please contact us directly
Different antenna types (cable length, connectors) or regional power adapters are available

Accessories compatibility

Accessories	Order code	TRB140	TRB141	TRB142	TRB145	TRB245	TRB255	RUT230	RUT240	RUT850	RUT900	RUT950	RUT955	RUTX08	RUTX09	RUTX10	RUTX11	RUTX12	RUTXR1
Power cable with 4-way screw terminal	058R-00229	*	*	*	*	*	*	*	*	*	*	*	*	*	*	*	*	*	*
Automotive power supply	058R-00249	*	*	*	*	*	*	*	*	*	*	*	*	*	*	*	*	*	*
EU power supply, 4.5 W	035R-00145	*	*	*	*	*	*	*	*	*	*	*	*	*	*	*	*	*	*
UK power supply, 4.5 W	035R-00146	*	*	*	*	*	*	*	*	*	*	*	*	*	*	*	*	*	*
EU power supply, 9 W	035R-00143					*	*	*	*	*	*	*	*	*	*	*	*	*	*
UK power supply, 9 W	035R-00148					*	*	*	*	*	*	*	*	*	*	*	*	*	*
EU power supply, 18 W	035R-00150													*	*	*	*	*	*
UK power supply, 18 W	035R-00151													*	*	*	*	*	*
Combo MIMO mobile/GNSS/WiFi roof SMA antenna	003R-00253							*	*		*	*	*			*	*	*	*
Combo MIMO mobile roof SMA antenna	003R-00252	*	*	*	*	*	*	*	*		*	*	*			*	*	*	*
Combo SISO mobile/GNSS/WiFi roof SMA antenna	003R-00254							*	*		*	*	*						
GNSS adhesive SMA antenna	003R-00250												*		*		*	*	*
GNSS adhesive FAKRA antenna	003R-00235									*									
Mobile adhesive SMA antenna	003R-00263	*	*	*	*	*	*	*	*		*	*	*		*		*	*	*
Mobile adhesive FAKRA antenna	003R-00177									*							*	*	*
Mobile magnetic SMA antenna	003R-00229	*	*	*	*	*	*	*	*		*	*	*		*		*	*	*
Mobile SMA antenna	003R-00225	*	*	*	*	*	*	*	*		*	*	*		*		*	*	*
WiFi magnetic SMA antenna	003R-00230							*	*		*	*	*						
WiFi SMA antenna	003R-00224							*	*		*	*	*						
WiFi dual band magnetic SMA antenna	003R-00247										*	*	*			*	*	*	*
WiFi dual band SMA antenna	003R-00249															*	*	*	*
Bluetooth SMA antenna	003R-00256															*	*	*	*
Compact DIN rail kit	PR5MEC11	*	*	*	*	*	*	*	*		*	*	*	*	*	*	*	*	*
DIN rail kit	PR5MEC00	*	*	*	*	*	*	*	*		*	*	*	*	*	*	*	*	*
Surface mounting kit	PR5MEC12	*	*	*	*	*	*	*	*		*	*	*	*	*	*	*	*	*
TRB DIN rail kit	PR5MEC13	*	*	*	*														

 CZ: +420 556 621 030
INT: +420 556 621 020

 CZ: obchod@sectron.cz
INT: sales@sectron.cz

 SECTRON s.r.o.
Josefa Šavla 12, 709 00 Ostrava, Czech Republic