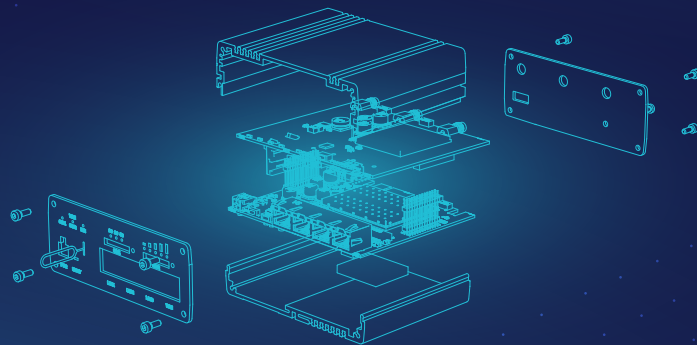


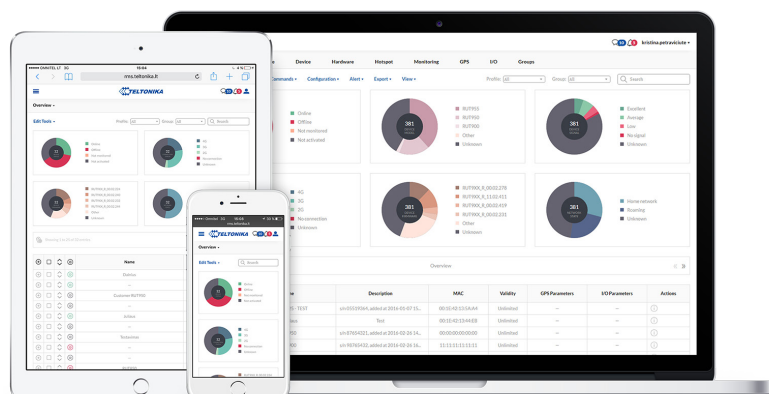
TELTONIKA Router & Gateway Overview



SECTRON is an official authorized partner to sell and instal TELTONIKA networking products designed to make your connectivity reliable, secure and quick to deploy. TELTONIKA products will help you build a solid IoT, M2M or enterprise networking infrastructure and advanced remote management capabilities will enable you to manage it with ease.

Portfolio Highlights

- ROUTERS are equipped with a variety of wireless and wired connectivity options and technologies
- RutOS based on Linux OpenWRT has become one of the most functional router operating systems in the market
- TRB programmable M2M gateways come with a variety of interfaces such as Ethernet, RS232, RS485 or Inputs/Outputs
- Remote Management System (RMS) as a centralized Cloud-based platform for remote monitoring, configuration and control



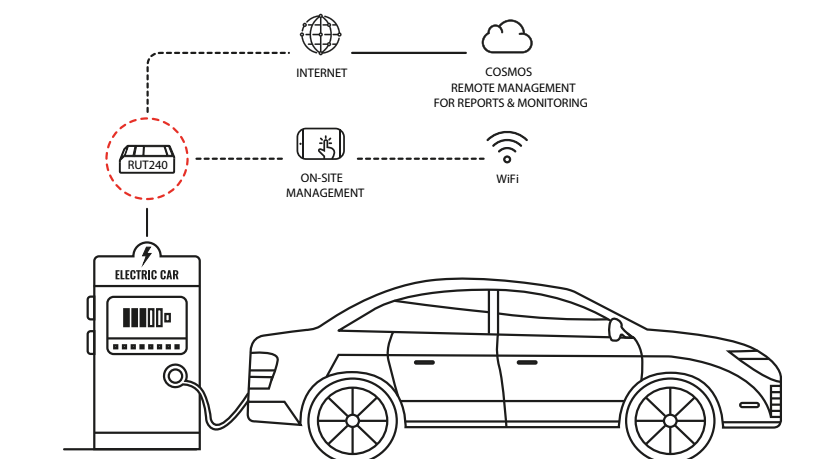
Routers comparison

Products key features	RUT240	RUT241	RUT300	RUT360	RUT950	RUT951	RUT955	RUT956	RUTX09	RUTX10	RUTX11	RUTX12	RUTX14	RUTXR1	TCR100
Range	EASY	EASY	EASY	EASY	ADVANCED	ADVANCED	PROFESSIONAL	PROFESSIONAL	ADVANCED	ADVANCED	ADVANCED	ADVANCED	PROFESSIONAL	ADVANCED	HOME
2G/3G	+/•	+/•		-/•	+/•	+/•	+/•	+/•	-/•		-/•	-/•	-/•	-/•	-/•
4G (LTE), Category	Cat4	Cat4		Cat6	Cat4	Cat4	Cat4	Cat4	Cat6		Cat6	2×Cat6	Cat12	Cat6	Cat6
GNSS							•				•	•	•		
WiFi standard	n	n		n	n	n	n			ac	ac	ac	ac	ac	ac
RS232							•	•							
RS485							•	•							
USB			Host				Host	Host	Host	Host	Host	Host	Host	Host	
Bluetooth										•	•	•	•		
DIN Rail mounting	•	•	•	•	•	•	•	•	•	•	•	•	•		
Rack mounting														•	
Flat surface mounting	•	•	•	•	•	•	•	•	•	•	•	•	•		•
SIM card slots	1	1		1	2	2	2	2	2		2	2	2	2	1
Aluminium housing	•	•	•	•	•	•	•	•	•	•	•	•	•	•	
CPU, MHz	400	580	650	650	550	580	550	580	717	717	717	717	717	717	650
Number of cores	1	1	1	1	1	1	1	1	4	4	4	4	4	4	1
RAM, MB	64	128	64	128	128	128	128	128	256	256	256	256	256	256	128
Flash memory, MB	16	16	16	16	16	16	16	16	256	256	256	256	256	256	16
Ethernet ports	2	2	5	2	4	4	4	4	4	4	4	5	5	5	2
Ethernet speed, Mbps	100	100	100	100	100	100	100	100	1000	1000	1000	1000	1000	1000	100
Passive PoE	•	•	•		•	•	•	•	•	•	•	•	•		
Power Supply voltage, V DC	9-30	9-30	7-30	9-30	9-30	9-30	9-30	9-30	9-50	9-50	9-50	9-50	9-50	2×(9-50)	9-30
Inputs/Outputs	2	2	2	2	2	2	6	8	2	2	2	2	2		
Grounding terminal									•	•	•	•	•	•	
RMS support	•	•	•	•	•	•	•	•	•	•	•	•	•	•	•
RutOS	•	•	•	•	•	•	•	•	•	•	•	•	•	•	•

RUT240 Case study for EV charging stations

Circontrol's DC quick charging station is a complex and comprehensive hardware and software solution connected to Circontrol's advanced "COSMOS" cloud-based platform. It is used to collect and store data from a specific set of EV chargers for monitoring and reporting. In addition, it allows operators to address different actions such as subscribe and unsubscribe users and manage their permissions and profiles as required.

EV charger log is also included with a goal to reduce the fault resolution time, obtaining a quick diagnosis if any charger is not working as it should. Teltonika RUT240 is a crucial intermediary between EV charger, platform and the operator to ensure that Circontrol's EV chargers are always operating to their full potential. The router is plugged in via Ethernet interface and provides a stable and secure connection via LTE to Circontrol's platforms. In addition, WiFi hotspot functionality allows simple on-site inspection and management of preferred settings.



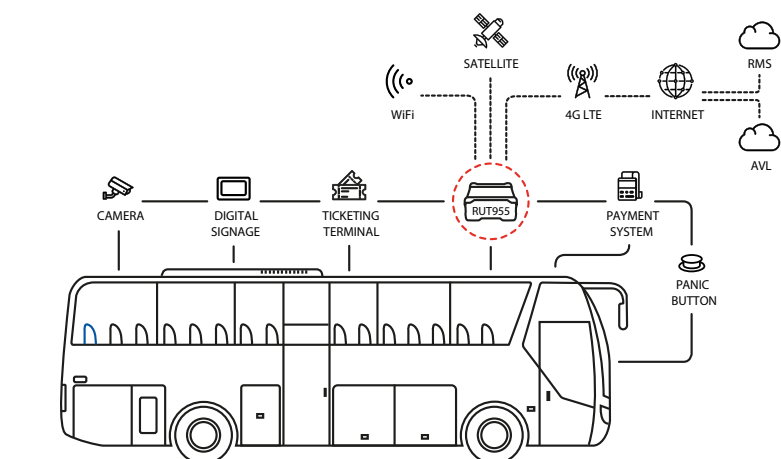
Modems, Gateways and Switches comparison

Products key features	TRM240	TRM250	TRB140	TRB141	TRB142	TRB145	TRB245	TRB255	TSW100	TSW110	TSW200
Category	Modem	Modem	Gateway	Gateway	Gateway	Gateway	Gateway	Gateway	Switch	Switch	Switch
2G/3G	•/•	•/-	•/•	•/•	•/•	•/•	•/•	•/-			
4G (LTE), Category	Cat1	M1/NB	Cat4	Cat1	Cat1	Cat1	Cat1	M1/NB			
GNSS								•	•		
WiFi standard											
RS232					•			•	•		
RS485						•	•	•			
USB	Slave	Slave	Slave	Slave	Slave	Slave					
DIN Rail mounting	•	•	•	•	•	•	•	•	•	•	•
Rack mounting											
Flat surface mounting	•	•	•	•	•	•	•	•	•	•	•
SIM card slots	1	1	1	1	1	1	2	2			
Aluminium housing	•	•	•	•	•	•	•	•	•	•	•
CPU, MHz			1200	1200	1200	1200	650	650			
Number of cores			1	1	1	1	1	1			
RAM, MB			128	128	128	128	64	64			
Flash memory, MB			512	512	512	512	16	16			
Ethernet ports			1				1	1	5	5	8
Ethernet speed, Mbps			1000				100	100	1000	1000	1000
Passive PoE			•						802.3af/at PoE out	•	802.3af/at PoE out
Power Supply voltage, V DC	5	5	9-30	9-30	9-30	9-30	9-30	9-30	7-57	9-30	7-57
Inputs/Outputs			2	8	2	2	4	4			
Grounding terminal									•	•	•
Sleep mode	•	•	•	•	•	•					
RMS support			•	•	•	•	•	•			
RutOS			•	•	•	•	•	•			

RUT955 Case study for public transport

RUT955 by Teltonika is a single device able to address most onboard connectivity challenges with ease. It is favored amongst our partners in the transport field due to a reliable connection, it is able to provide using auto switching dual SIMs, a large number of physical interfaces and E-mark certification ensuring full compliance with a number of important requirements when mounting additional devices in aftermarket automotive vehicles.

- Provide accurate location tracking services using embedded GNSS module
- Connect up to seven 1080p30 CCTV IP security cameras due to robust and reliable Cat4 LTE
- Provide secure passenger hotspot with advertising and landing page for convenient and managed browsing
- Empower Digital Signage screens across the vehicle for informational and advertising services
- Give connectivity to existing or new ticketing terminals via Ethernet or Serial to ensure card payments or collect and upload ticketing statistics to operator's platform




Routers comparison

Products key features	Order code (Standard package)	Standard package content							
		Power supply	Mobile Antenna	LTE Antenna	WiFi Antenna	GNSS Antenna	Bluetooth Antenna	Ethernet Cable	USB cable
TRB140	TRB140003000	Euro adapter		1×					0.8 m
TRB141	TRB141003000	Euro adapter		1×					0.8 m
TRB142	TRB142003000	Euro adapter		1×					0.8 m
TRB145	TRB145003000	Euro adapter		1×					0.8 m
TRB245	TRB245000000	Euro adapter		1×		1×		1.5 m	
TRB255	TRB255000000	Euro adapter	1×			1×		1.5 m	
TRM240	TRM240000000			1×					0.8 m
TRM250	TRM250000000		1×						0.8 m
TSW100	TSW100000000	Euro adapter							
TSW110	TSW110000000	Euro adapter							
TSW200	TSW200000010								
RUT240	RUT24006E000	Euro adapter		2×	1×			1.5 m	
RUT241	RUT241011000	Euro adapter		2×	1×			1.5 m	
RUT300	RUT300000000	Euro adapter						1.5 m	
RUT360	RUT360000000	Euro adapter		2×	2×			1.5 m	
RUT950	RUT950U022C0	Euro adapter		2×	2×			1.5 m	
RUT951	RUT951100000	Euro adapter		2×	2×			1.5 m	
RUT955	RUT955T033B0	Euro adapter		2×	2×	1×		1.5 m	
RUT956	RUT956100000	Euro adapter		2×	2×	1×		1.5 m	
RUTX09	RUTX090000000	Euro adapter		2×		1×		1.5 m	
RUTX10	RUTX100000000	Euro adapter			2×		1×	1.5 m	
RUTX11	RUTX110000000	Euro adapter		2×	2×	1×	1×	1.5 m	
RUTX12	RUTX120000000	Euro adapter		4×	2×	1×	1×	1.5 m	
RUTX14	RUTX140000000	Euro adapter		4×	2×	1×	1×	1.5 m	
RUTXR1	RUTXR1000000	Euro adapter		2×	2×			1.5 m	
TCR100	TCR100000000	Euro adapter		2×				1.5 m	


For more information on all available packaging options – please contact us directly
Different antenna types (cable length, connectors) or regional power adapters are available

Accessories compatibility

Accessories	Order code	TRB140	TRB141	TRB142	TRB145	TRB245	TRB255	TRM240	TRM250	TSW100	TSW110	TSW200	RUT240	RUT241	RUT300	RUT360	RUT950	RUT951	RUT955	RUT956	RUTX09	RUTX10	RUTX11	RUTX12	RUTX14	RUTXR1	TCR100
Power cable with 4-way screw terminal	PR2FK20M	*	*	*	*					*	*		*	*	*	*	*	*	*	*	*	*	*	*	*	*	*
Automotive power supply	PR2AM20M	*	*	*	*					*	*		*	*	*	*	*	*	*	*	*	*	*	*	*	*	*
EU/UK power supply, 9 W	PR3PUEU3/PR3PUK3	*	*	*	*	*	*				*		*	*	*	*	*	*	*	*	*	*	*	*	*	*	*
Universal power supply, 9 W	PR3PUPS3	*	*	*	*	*	*				*		*	*	*	*	*	*	*	*	*	*	*	*	*	*	*
EU /UK power supply, 18 W	PR3PXEU3/ PR3PXUK3															*					*	*	*		*	*	*
EU/UK power supply, 24 W	PR3P2EU3/ PR3P2UK3																							*	*		*
EU/UK 2pin power supply, 62 W	PR317EUA/ PR317UKA											*															
DIN Rail power supply	PR3PDNP0	*	*	*	*	*	*						*	*	*	*	*	*	*	*	*	*	*	*	*	*	*
Combo MIMO mobile/GNSS/WiFi roof SMA antenna	PR1KCO28												*	*	*	*	*	*	*	*	*	*	*	*	*	*	*
Combo MIMO mobile roof SMA antenna	PR1KCL25												*	*	*	*	*	*	*	*	*	*	*	*	*	*	*
Combo SISO mobile/GNSS/WiFi roof SMA antenna	PR1KCS28					*	*																				
Combo QUAD mobile/GNSS roof SMA antenna	PR1KCL28												*	*	*	*	*	*	*	*	*	*	*	*	*	*	*
GNSS adhesive SMA antenna	PR1KSG30					*	*											*	*	*	*	*	*	*	*	*	*
Mobile adhesive SMA antenna	PR1AS420	*	*	*	*	*	*	*	*				*	*	*	*	*	*	*	*	*	*	*	*	*	*	*
Mobile magnetic SMA antenna	PR1KS210	*	*	*	*	*	*	*	*				*	*	*	*	*	*	*	*	*	*	*	*	*	*	*
Mobile connector SMA antenna	PR1US440	*	*	*	*	*	*	*	*				*	*	*	*	*	*	*	*	*	*	*	*	*	*	*
Mobile angled compact connector SMA antenna	PR1US450	*	*	*	*	*	*	*	*				*	*	*	*	*	*	*	*	*	*	*	*	*	*	*
Mobile straight compact connector SMA antenna	PR1CS450	*	*	*	*	*	*	*	*				*	*	*	*	*	*	*	*	*	*	*	*	*	*	*
WiFi magnetic SMA antenna	PR1KRF30												*	*	*	*	*	*	*	*	*	*	*	*	*	*	*
WiFi connector SMA antenna	PR1URF51												*	*	*	*	*	*	*	*	*	*	*	*	*	*	*
WiFi dual band magnetic SMA antenna	PR1KRD30																					*	*	*	*	*	*
WiFi dual band connector SMA antenna	PR14RD35																					*	*	*	*	*	*
Bluetooth magnetic SMA antenna	PR1KRT25																					*	*	*	*	*	*
Compact DIN rail kit	PR5MEC11	*	*	*	*	*	*	*	*	*	*	*	*	*	*	*	*	*	*	*	*	*	*	*	*	*	*
DIN rail kit	PR5MEC00	*	*	*	*	*	*	*	*	*	*	*	*	*	*	*	*	*	*	*	*	*	*	*	*	*	*
Surface mounting kit	PR5MEC12	*	*	*	*	*	*	*	*	*	*	*	*	*	*	*	*	*	*	*	*	*	*	*	*	*	*

 CZ: +420 556 621 030
INT: +420 556 621 020

 CZ: obchod@sectron.cz
INT: sales@sectron.cz

 SECTRON s.r.o.
Josefa Šavla 12, 709 00 Ostrava, Czech Republic